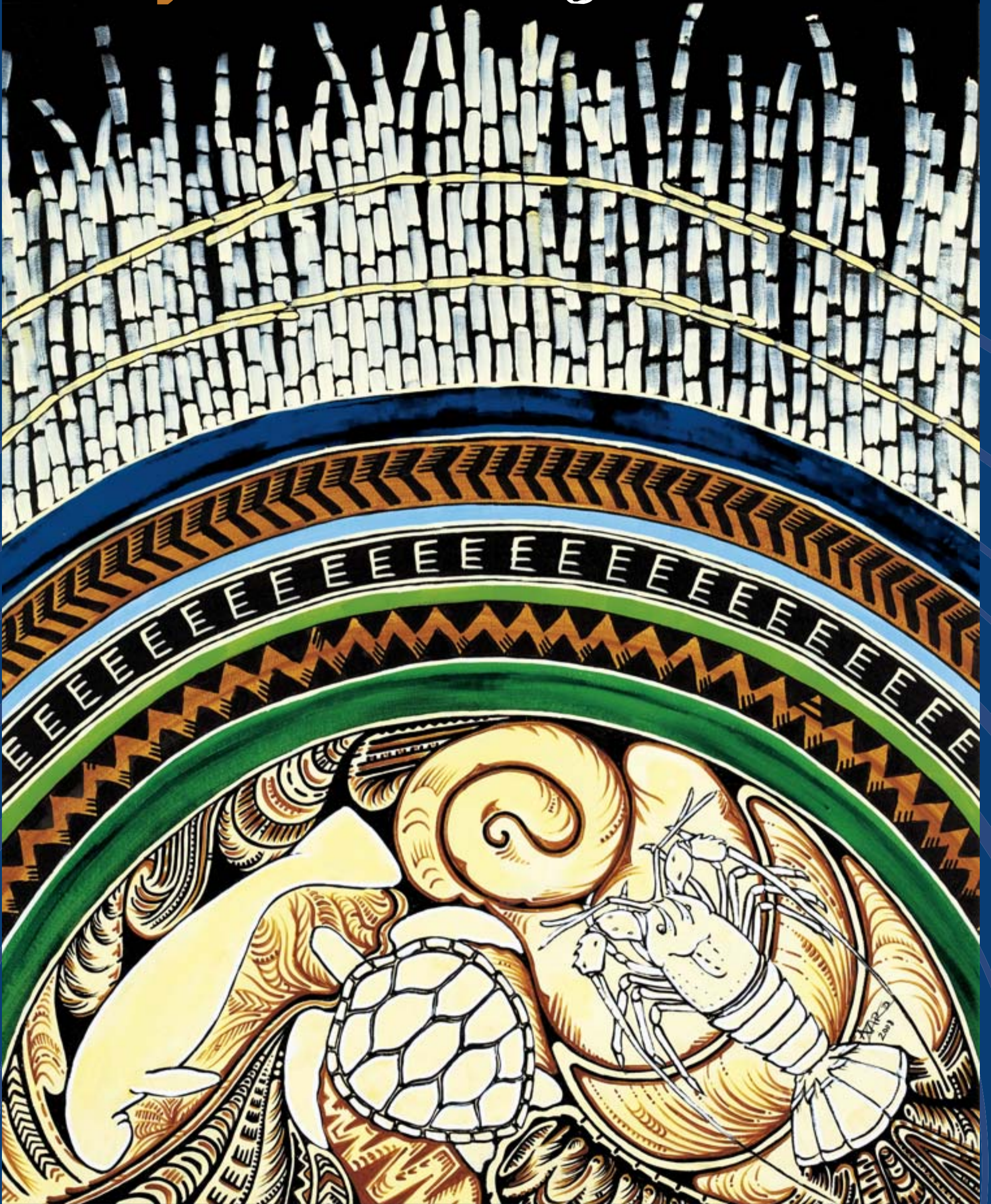


# everyone has the right to be heard



Painting by Aicey Zaro

Recognised throughout the Torres Strait, the traditional markings in the centre of the artwork symbolise a sense of belonging and acceptance to Torres Strait Islander (TSI) people. QADA can work with you when you face problems – and give you that sense of belonging.

Moving together in the same direction, the sea creature totems (crayfish, turtle

and dugong) represent 'family'. QADA understands how important it is to share your problems with others – and aims to be like family for people who need support.

The swirls between the sea creatures represent the inside of the Bua shell which was used in old times to send messages. It symbolises the knowledge and skills that

QADA uses to support people to be heard, to help sort out problems and provide options.

The bamboo fence (top) which is still used today to protect island homes from strong winds and erosion represents protecting the culture and beliefs of TSI people. QADA understands your culture and wants to help you to be heard.



[www.qada.org.au](http://www.qada.org.au)

freecall: 1800 818 338



Queensland Aged & Disability  
**advocacy** Inc.